

# Quick set up guide

# WallTalk

Digital Signage



*Leaders in learning technology*



# Quick set up guide for **Wall Talk** Digital Signage

# Quick guide contents

---

Now that you have received your kit, you will want to get started straight away.

We want you to enjoy using this brilliant communication tool and have prepared this quick-start guide to help you get up and running as soon as possible.

Over the next few pages, Wall Talk will take you through a step-by-step process of setting up your display.

1. Check the package contents

---

2. Features

---

3. Setting up the Wall Talk box

---

4. Creating a 'project'

---

5. Adding your own content

---

6. Creating your schedule

---

7. What can I use it for?

---

8. Support

---

# Package contents

---

You should have the following contents:

- Genee Wall Talk unit

---

- Unit stand

---

- External power lead

---

- Windows 7 Home Edition software (pre-loaded)

---

- Digital signage software (pre-loaded)

---

- Template and resources (pre-loaded)

---

- Keyboard

---

- Mouse

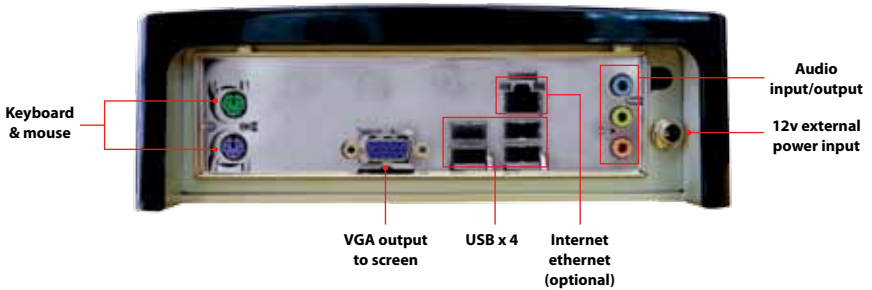
---

# Features

---



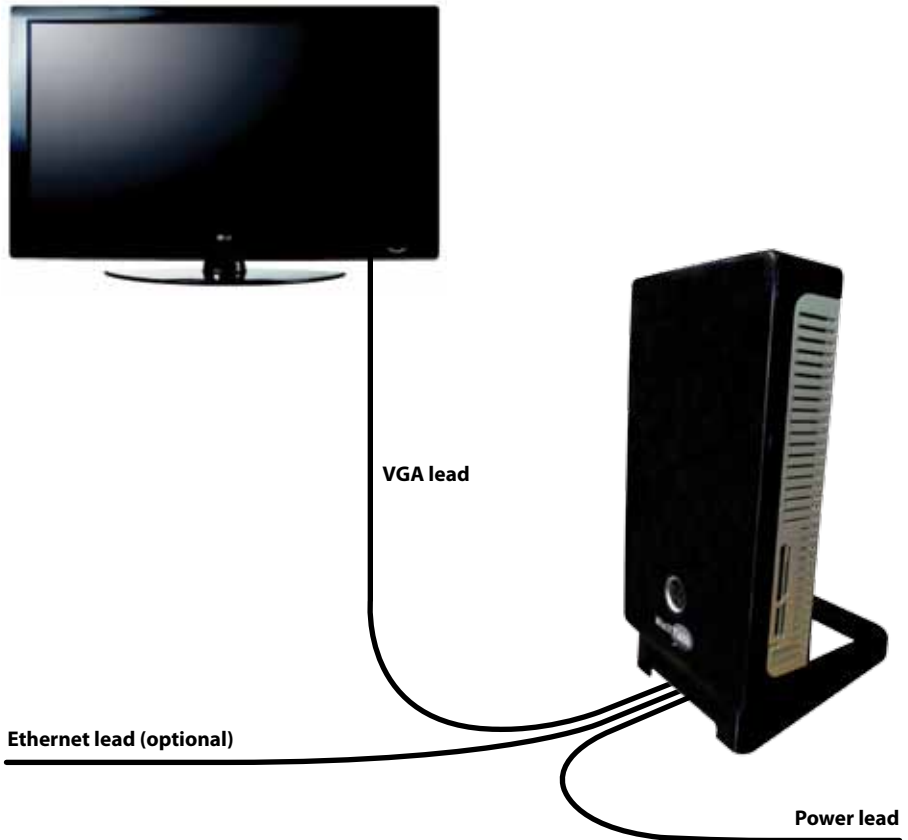
Optional stand



# Setting up the Wall Talk box

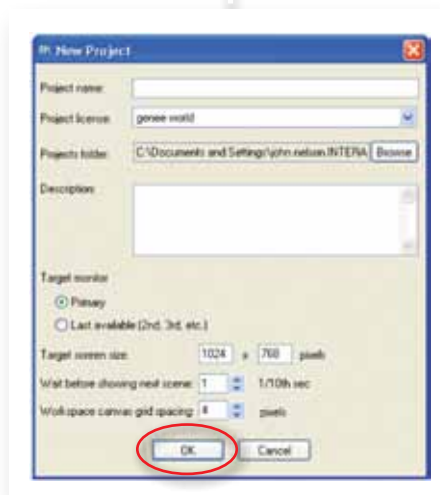
---

Connecting Wall Talk is the same as any other PC.  
Duplicate screens can be connected by using a splitter.



# Creating a 'project'

When starting the digital signage software for the first time, click on **Create new project**, give your project a name and click **OK**.



# Composing a 'scene'

---

You now have a blank page (it can be a different colour or even a picture by going to 'scene properties').

Click on **View** if you cannot see the Objects Toolbox. Click an object and drag the rectangular shape to the desired position and size on the page (it can be changed at time).

The page can be filled with any combinations of chosen objects, but areas cannot be overlapped.

A dialogue box will open up as each object area is drawn (just double-click in the area to go back and re-edit).

Items or text etc. can be added, or other details specified, depending on the object type.

**Scene Preview** (or F5) will show that scene at any point (press **Escape** to come out of the preview).



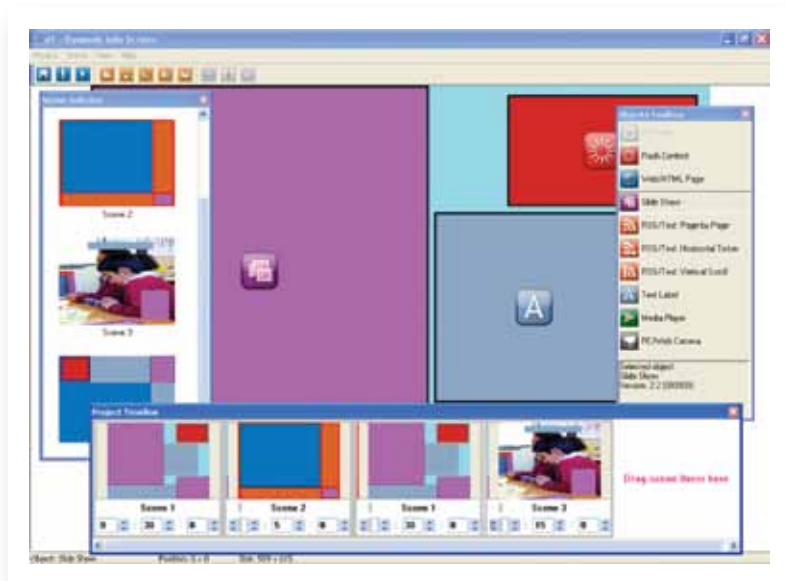


# Viewing a project

Any number of new scenes can be added and will appear in the **Scene Selector** box.

They can then be dragged into the **Project Timeline** box in any sequence order you wish; each can be given a display time allocation.

**Preview Project** (or F6) will launch the display and the scenes will run on a continuous loop.





# What can I use it for?

---

- General information about your school
- Current messages
- Notification and reminders of forthcoming events
- Lunchtime menus and healthy eating messages
- Photo slideshows of events, trips, productions etc.
- Website pages
- Timetables and extra-curricular programmes
- Examples of children's work
- School uniform ranges and prices
- Positive comments from Ofsted, parents, children, visitors etc.
- Governor information
- Parent Association news
- Current news, traffic, sport, weather etc. RSS feeds
- Local community news and pictures
- Health and Safety messages
- Multi lingual messages
- Live webcam window
- Fun quizzes
- Sponsored advertisements



# Support

---

**Free technical helpline**

---

**Tel:** 0870 386 1900 EXT 4

---

**Email:** [technical@geneeworld.com](mailto:technical@geneeworld.com)

---

**Website:** [www.geneeworld.com](http://www.geneeworld.com)

---

1 year warranty

---



*Leaders in learning technology*

---

**Genee World**  
**PO Box 3256**  
**Wolverhampton**  
**WV3 0LA**

---

**Sales Tel:** 0870 386 1900  
**Fax:** 0870 405 0188  
**Email:** [enquiries@geneeworld.com](mailto:enquiries@geneeworld.com)  
**Web:** [www.geneeworld.com](http://www.geneeworld.com)

---