

# Quick set up guide

**GENEE** **vision**<sup>®</sup>  
150



*Leaders in learning technology*



# Quick set up guide for **Genee Vision 150** visualiser

# Quick guide contents

---

Now that you have received your visualiser you will want to get started straight away.

Visualisers can be used independently through a direct connection to a projector or monitor screen, or can be linked to a computer to integrate with software applications and interactive whiteboards.

Over the next few pages you will be shown how to connect and operate your visualiser.

1. Package contents

---

2. Connectivity identification

---

3. Connecting to a projector

---

4. Using the features

---

5. Loading the software

---

6. FAQ

---

7. Support

---

# Package contents

---



Visualiser unit



Remote control



Software CD



USB  
A-A lead



Power supply  
adapter



IEC mains  
cable

VGA  
male-male

# Connectivity identification

---

## Connection ports



**DC-12V**

External 12V power adapter input connector

**USB**

Computer image capture and video recording for both PC and Mac

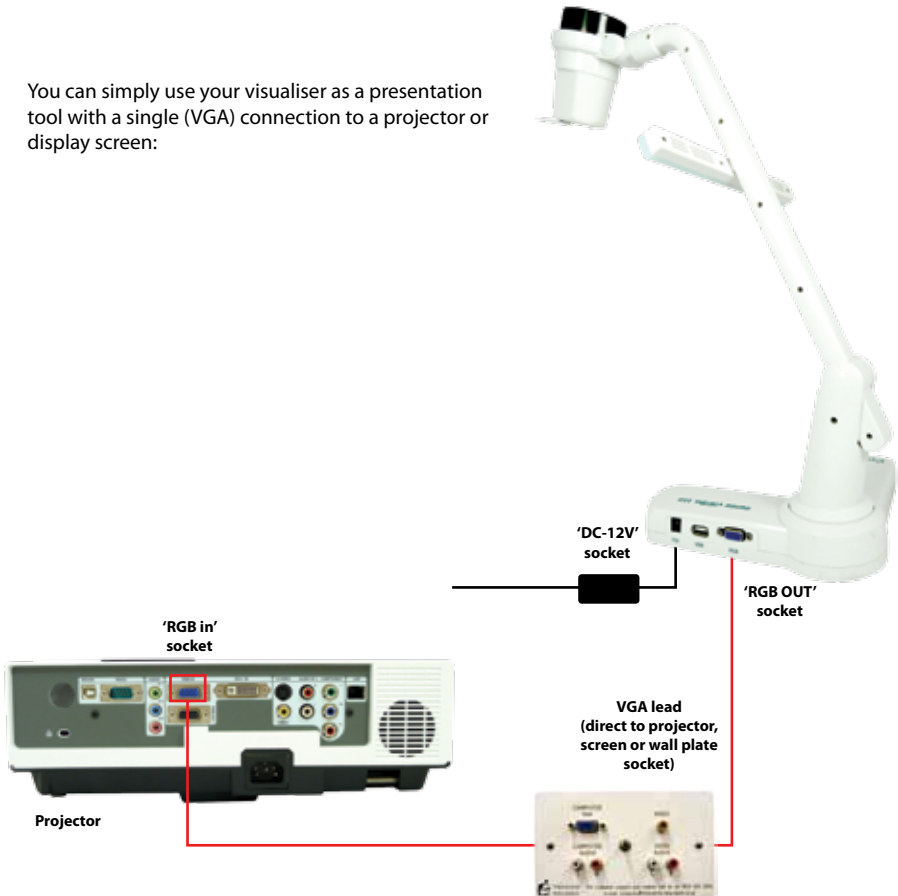
**RGB OUT 1**

RGB output

# Connecting to a projector

---

You can simply use your visualiser as a presentation tool with a single (VGA) connection to a projector or display screen:



You should now be able to see any 2D or 3D object placed under the camera, and use the built-in functions.

# Using the features

The visualisers have built-in functions that can be operated either from the control panel buttons or from the remote control.



## Button functions on the visualiser



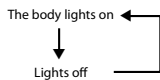
### Zoom button

Press the ⊕ or ⊖ button to zoom in or zoom out



### Light button

Each time you press the button, the lighting changes as below:



### Power

Press the button once to power on the visualiser; press the button again to power off the visualiser

## Button functions on the remote

- POWER** Control the visualiser On/Off
- SAVE** Save an image
- RECALL** View saved images
- LAMP** Control the arm lights
- FREEZE** Freeze the image
- NEG** Display negative image
- MIRROR** Reverse the image
- SPLIT** Image Split function
- XGA** XGA/SXGA
- B&W** Add and remove colour
- TITLE** Freeze the top 1/8 of the screen
- PROJECTOR POWER** Control projector if linked
- PROJECTOR INPUT** Input selection
- TEXT** Sharpens image
- ⊕ T/W ⊖** Increase and decrease the magnification
- BRIGHT + / -** Alters brightness
- FAR/NEAR** Focus far or near
- AUTO** To auto adjust white balance and auto focus
- RED + / -** Alter colour balance
- BLUE + / -** Alter colour balance

**Remarks:** Frz, Title, and Split functions are available on PROJECTOR OUT and USB ports.

# Loading the software

---

The accompanying disk has essential software for enabling your computer to recognise the visualiser and capture images, both still and moving. This will be done through the USB connecting lead.

The driver for your operating system must be installed before connecting the USB lead. The set-up wizard will take you through the process.

VideoCap and Genee Toolbar are programs that will give you live camera windows and whiteboard tools on your desktop, allowing you to annotate over them or capture in common image and video formats that can be incorporated into different applications.



The disk also contains additional information, including user guides and training videos.



# FAQ

---

## 1 I cannot get an image through the projector

- i. Is the power connected and switched on (see step 3)?
- ii. Is the lens cover open?
- iii. Is the VGA lead connection from the projector plugged into the visualiser?

## 2 How do I switch to my desktop image on my board?

Swap the VGA projector lead from the visualiser to your computer.

## 3 How do I annotate over my visualiser images?

- i. Check that the supplied VideoCap and/or Genee Toolbar has been installed.
- ii. Check that the supplied USB lead is connecting the visualiser to your computer.
- iii. Open either the VideoCap or Genee Toolbar software to get a live video window (you may have to select the USB 2861 camera if there is a choice).
- iv. You can now use your IWB tools or the Genee Toolbar tools to annotate over.

## 4 Will this work with any board?

Yes.

## 5 Can I save these images?

VideoCap and Genee Toolbar will save both still images and video images. You can also use generic programs such as Microsoft MovieMaker or insert images directly onto Word pages, for example, by going to the 'insert from camera or scanner' command.

Please contact [technical@geneeworld.com](mailto:technical@geneeworld.com) if the problem persists.



# Support

---

## **Free technical helpline**

---

**Tel:** 0870 386 1900 Option 4

---

**Email:** [technical@geneeworld.com](mailto:technical@geneeworld.com)

---

**Website:** [www.geneeworld.com](http://www.geneeworld.com)

---

**UK warranty:** 5 years collect and return

---

**International warranty:** available on request

---





*Leaders in learning technology*

---

**Genee World**  
**PO Box 3256**  
**Wolverhampton**  
**WV3 0LA**

---

**Sales Tel:** 0870 386 1900  
**Fax:** 0870 405 0188  
**Email:** [enquiries@geneeworld.com](mailto:enquiries@geneeworld.com)  
**Web:** [www.geneeworld.com](http://www.geneeworld.com)

---