

# Quick set up guide

**GENEE** **VISION**<sup>®</sup>  
Visualisers



*Leaders in learning technology*



Quick set up guide for  
**Genee Vision** visualisers  
6100 • 7100 • 8100 • 9100 • Elite

# Quick guide contents

---

Now that you have received your visualiser you will want to get started straight away.

Visualisers can be used independently through a direct connection to a projector or monitor screen, or can be linked to a computer to integrate with software applications and interactive whiteboards.

Over the next few pages you will be shown how to connect and operate your visualiser.

1. Package contents

---

2. Connectivity identification

---

3. Connecting to a projector

---

4. Using the features

---

5. Switching projector inputs

---

6. Loading the software

---

7. FAQ

---

8. Support

---

# Package contents

---



Visualiser unit



Remote control  
(stored in base of unit)



Software CD



S-VHS cable

Composite A/V phono cable

Power supply adapter

3.5mm jack to stereo phono sockets

RS232 to PS2 cable

IEC mains cable

VGA male-male

RS232 serial cable

USB A-A lead

# Connectivity identification

---

**Rear panel** GV6100 / 7100 / 8100 / 9100



**Side panel** GV6100 / 7100 / 8100 / 9100



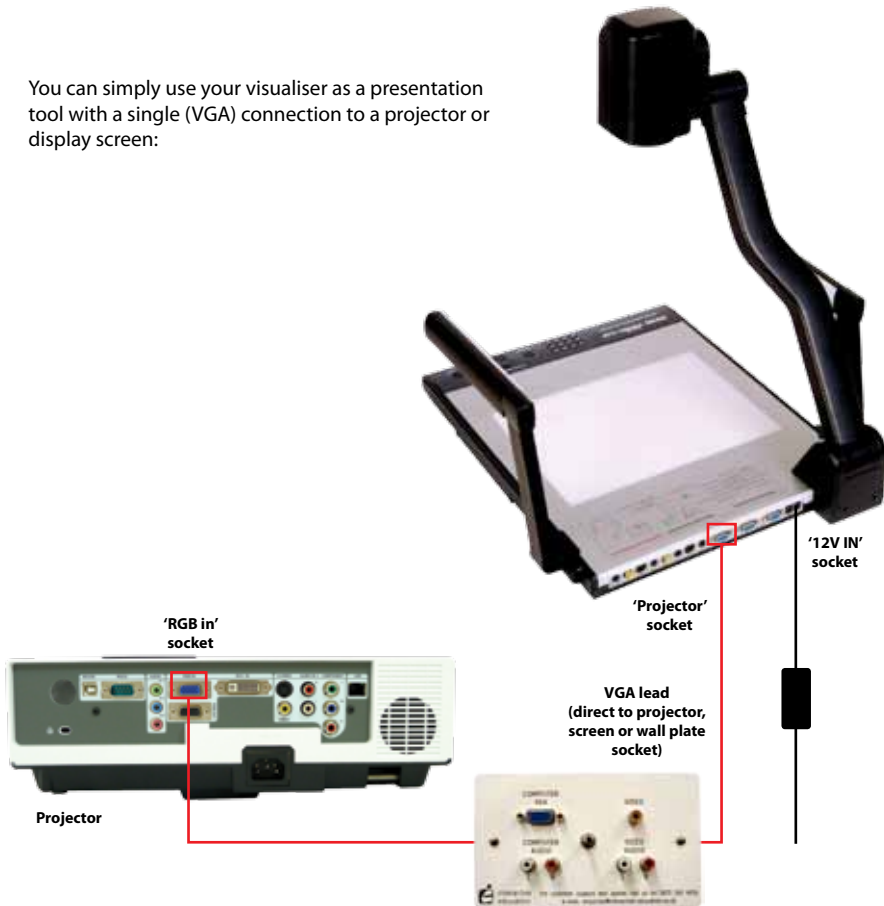
**Rear panel** GV Elite



# Connecting to a projector

---

You can simply use your visualiser as a presentation tool with a single (VGA) connection to a projector or display screen:



You should now be able to see any 2D or 3D object placed under the camera, and use the built-in functions.

# Using the features

The visualisers have built-in functions that can be operated either from the control panel buttons or from the remote control.



**Buttons and remotes may vary on different models**



## Button functions on the GV6100 / 7100 / 8100 / 9100 visualiser/remote

<b>POWER</b>	Control the visualiser On/Off Press and hold two seconds to power off visualiser	<b>CCD/PC1/PC2</b>	CCD/RGB input signal selection
<b>Mir</b>	Reverse the image	<b>S-VIDEO/VIDEO</b>	Video input signal selection
<b>Frz</b>	Freeze the image	<b>LAMP</b>	Control the arm lights and back light
<b>Neg</b>	Display negative image	<b>AUTO</b>	To auto adjust white balance and auto focus
<b>Title</b>	Freeze the top 1/8 of the screen	<b>T/W</b>	Increase and decrease the magnification
<b>D./S.</b>	Switch between static and dynamic modes	<b>B&amp;W</b>	Add and remove colour (remote)
<b>Far/Near</b>	Focus far or near	<b>Save</b>	Temporarily save images to Flash file (remote)
<b>Split</b>	Image Split function	<b>Recall</b>	View saved images (remote)
<b>Ppw</b>	Control the projector On/Standby (with RS232 link)	<b>Rotate</b>	90°, 180°, 270° image rotation (GV9100 only)
<b>Pin</b>	Projector input signal selection	<b>XGA</b>	Projector type
<b>↑ &amp; ↓</b>	Move the image up/down	<b>Text</b>	Sharpens image
		<b>Red +/-</b>	Alter colour balance
		<b>Blue +/-</b>	Alter colour balance
		<b>Bright +/-</b>	Alter brightness of image
		<b>Scroll ↑ / ↓</b>	Moves camera head
		<b>Projector power</b>	Control projector if linked
		<b>Projector input</b>	Input selection

### Remarks:

Frz, Title, D./S. and Split functions are only available on PROJECTOR OUT port with CCD camera models (GV6100, 7100 & 8100) and both PROJECTOR and USB ports with CMOS camera models (GV9100 & Elite).

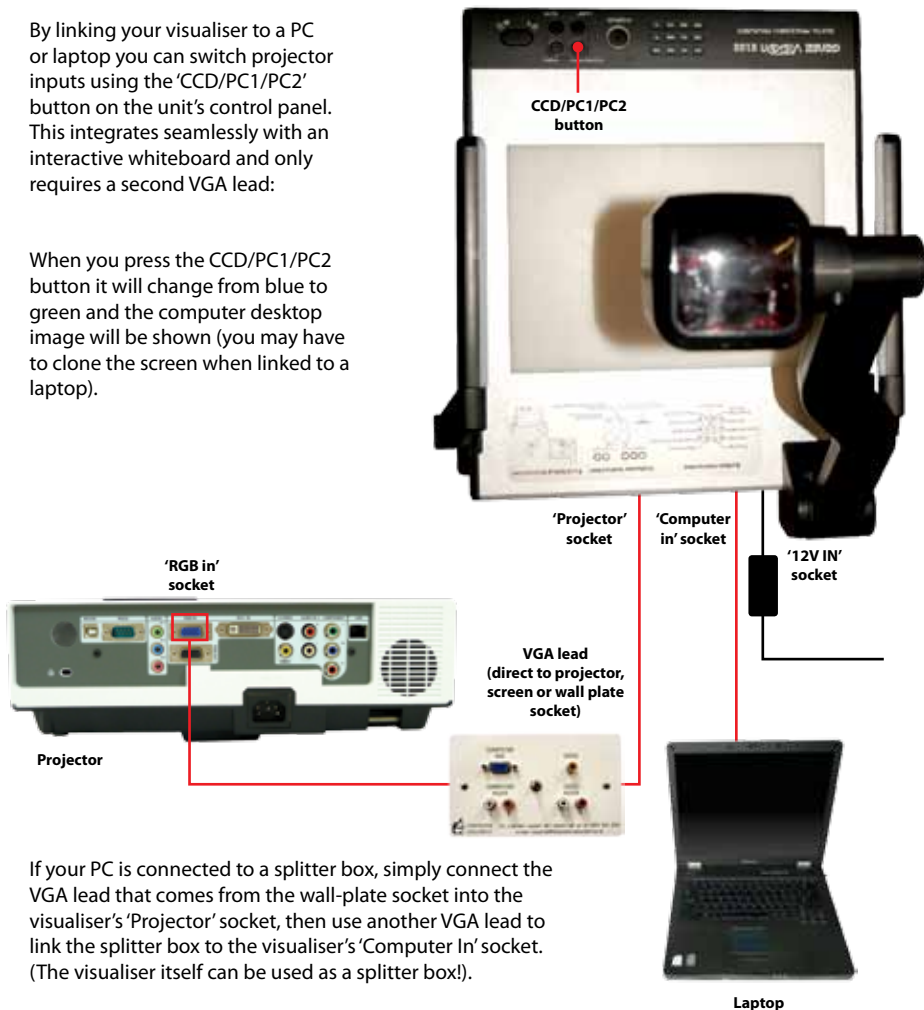
## Buttons on the GV Elite



# Switching projector inputs

By linking your visualiser to a PC or laptop you can switch projector inputs using the 'CCD/PC1/PC2' button on the unit's control panel. This integrates seamlessly with an interactive whiteboard and only requires a second VGA lead:

When you press the CCD/PC1/PC2 button it will change from blue to green and the computer desktop image will be shown (you may have to clone the screen when linked to a laptop).



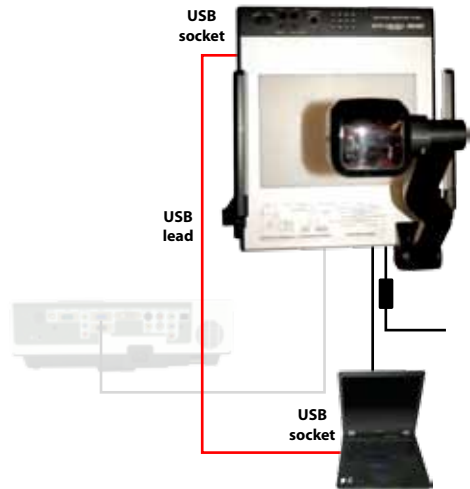
If your PC is connected to a splitter box, simply connect the VGA lead that comes from the wall-plate socket into the visualiser's 'Projector' socket, then use another VGA lead to link the splitter box to the visualiser's 'Computer In' socket. (The visualiser itself can be used as a splitter box!).

# Loading the software

The accompanying disk has essential software for enabling your computer to recognise the visualiser and capture images, both still and moving. This will be done through the USB connecting lead.

The driver for your operating system must be installed before connecting the USB lead. The set-up wizard will take you through the process.

VideoCap and Genee Toolbar are programs that will give you live camera windows and whiteboard tools on your desktop, allowing you to annotate over them or capture in common image and video formats that can be incorporated into different applications.



The disk also contains additional information, including user guides and training videos.



# FAQ

---

## 1 I cannot get an image through the projector

- i. Is the power connected and switched on (see step 3)
- ii. Have you taken the lens cap off?
- iii. Is the VGA lead connection from the projector plugged into the visualiser's 'projector' socket?

## 2 How do I switch to my desktop image on my board?

- i. Check that your VGA lead is connecting your visualiser to your computer (see step 3).
- ii. Press the CCD/PC1/PC2 button so that it turns green (see step 5)
- iii. Press the same button (until it goes to blue) to return to the visualiser.

## 3 How do I annotate over my visualiser images?

- i. Check that the supplied VideoCap and/or Genee Toolbar has been installed
- ii. Check that the supplied USB lead is connecting the visualiser to your computer
- iii. Open either the VideoCap or Genee Toolbar software to get a live video window (you may have to select the USB 2861 camera if there is a choice).
- iv. You can now use your IWB tools or the Genee Toolbar tools to annotate over

## 4 Will this work with any board?

Yes.

## 5 Can I save these images?

VideoCap and Genee Toolbar will save both still images and video images. You can also use generic programs such as Microsoft MovieMaker or insert images directly onto Word pages, for example, by going to the 'insert from camera or scanner' command.

Please contact [technical@geneeworld.com](mailto:technical@geneeworld.com) if the problem persists.



# Support

---

**Free technical helpline**

---

**Tel:** 0870 386 1900 Option 4

---

**Email:** [technical@geneeworld.com](mailto:technical@geneeworld.com)

---

**Website:** [www.geneeworld.com](http://www.geneeworld.com)

---

**UK warranty:** 5 years collect and return

---

**International warranty:** available on request

---

Other products available to use with your visualiser:

---



Carry case



GeneeMultiLock

Security cable



*Leaders in learning technology*

---

**Genee World**  
**PO Box 3256**  
**Wolverhampton**  
**WV3 0LA**

---

**Sales Tel:** 0870 386 1900  
**Fax:** 0870 405 0188  
**Email:** [enquiries@geneeworld.com](mailto:enquiries@geneeworld.com)  
**Web:** [www.geneeworld.com](http://www.geneeworld.com)

---